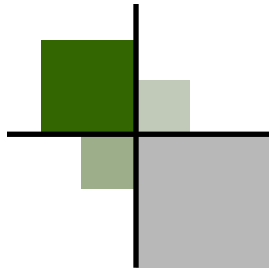


October, 2009

Laura Rizzardini, Inc.

The Society Pages



- Document Successes
- Increase Clients
- Impress Funders
- Plan Services
- Develop Programs

For a free consultation,
call 312/316-0965



**Illinois Drug Education
Alliance**

2800 Montvale Drive
Springfield, Illinois 62704
800/252-8951
<http://www.bestofidea.com>

The Society Pages are compiled
and edited by Jena Sendra.

© *Laura Rizzardini, Inc., 2009*

Occupational Safety and Women

Even though women share about half of the workforce with men, women had a lower amount of occupational injuries and deaths. This could be due to the types of jobs that women have compared to men.

In 2003, highway vehicle accidents were the leading cause of occupational deaths amongst women, surpassing that of homicides. Shootings were the leading cause of homicides among both sexes.

So why the difference in occupational injuries? This is due to the types of jobs that women have compared to men. Women typically do not work in professions that have a high number of injuries. In 2003,

the occupations with the highest incidences of illnesses were transportation and material workers, production workers, construction workers, and installation, repair, and maintenance workers. These professions are greatly occupied by men, whereas women primarily occupy the service occupations.

This may seem like a positive thing for women, that is, to be injured less in the workplace. Why do fewer women than men work in these occupations? Is it by choice or due to discrimination? If it is discrimination, is it really positive, after all?

Hoskins, A.B. (2005). Occupational injuries, illnesses, and fatalities among women. *Monthly Labor Review*. Retrieved from www.cdc.gov/publications.

A Man's World in Fashion?

Lately I have been noticing a trend in fashion that seems to be making its way back every year in women's wear; it is male inspired fashion. I'm not yet sure if this is a good or bad sign for equality.

It can be seen as positive if this trend is popping up in response to women gaining increasing power in society and in the work-

force. Is it that women and men can dress alike AND hold the same positions, living and working amongst each other as equals?

Or is it that women have to resort to dressing like men in order to try to gain an upper edge? Is it that women feel they have to look like men if they want to be considered as equals to men? Then, it sounds



like men still have the upperhand.

Jena Sendra, B.S. Works for Laura Rizzardini, Inc. as a research associate. She is studying for her M.S.W. in International Social Work.

Laura Rizzardini, Inc.

7115 W. North Avenue, #168
Oak Park, IL 60302

Phone: 312/316-0965
lrizzardini@lrizzardini.com

<http://www.lrizzardini.com>

Customized Research Designs

*Let us help you make your
vision a reality.*

Kiwanis

Kiwanis is a global organization of volunteers dedicated to changing the world, one child and one community at a time!



Kiwanis has more than 13,000 chapters in 80 countries with more than 600,000 members.

For Kiwanis membership information, please send an e-mail message to info@oakparkkiwanis.org.

The Problem of Raves Amongst Youth

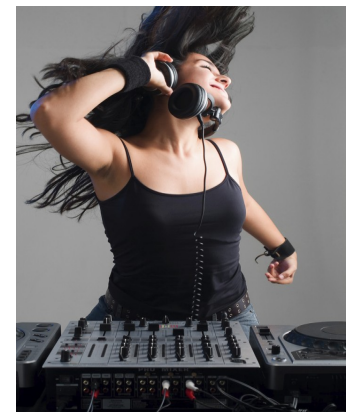
Raves are dance parties that have high-energy, fast-paced electronic music accompanied by light shows. They are usually attended by a youth culture that mixes music, art, and social ideals. Raves are unique in that they mix a blend of music, attitude, drugs, and behavior not seen in other forms of youth culture.

Raves can be dangerous in that much drug trafficking is done in this setting. There is also the potential to find drug overdoses, other medical hazards, and DUIs. The drugs that are usually found at this setting

are known as “club drugs”. The most often associated drug is ecstasy, but methamphetamine, and hallucinogenic and dissociative drugs are found, too. These drugs are often very dangerous as well as addictive.

The ravers are typically a young crowd; they are as young as 13 years old, but typically are in the 17-20 year old range. The raves usually start late at night and go into the morning; often, they are held in remote locations.

Ravers often wear costumes and face masks with



mentholated vapor rub applied inside to enhance the effects of ecstasy. Violence is common occurs at raves; they are dangerous events.

Scott, M.S. (2002). Rave parties. *Problem-Oriented Guide for Police Series*. U.S. Department of Justice. Retrieved from www.ncjrs.gov.